

MONTHLY MEMBERSHIP PROGRESS REPORT

LOCATION INDIA

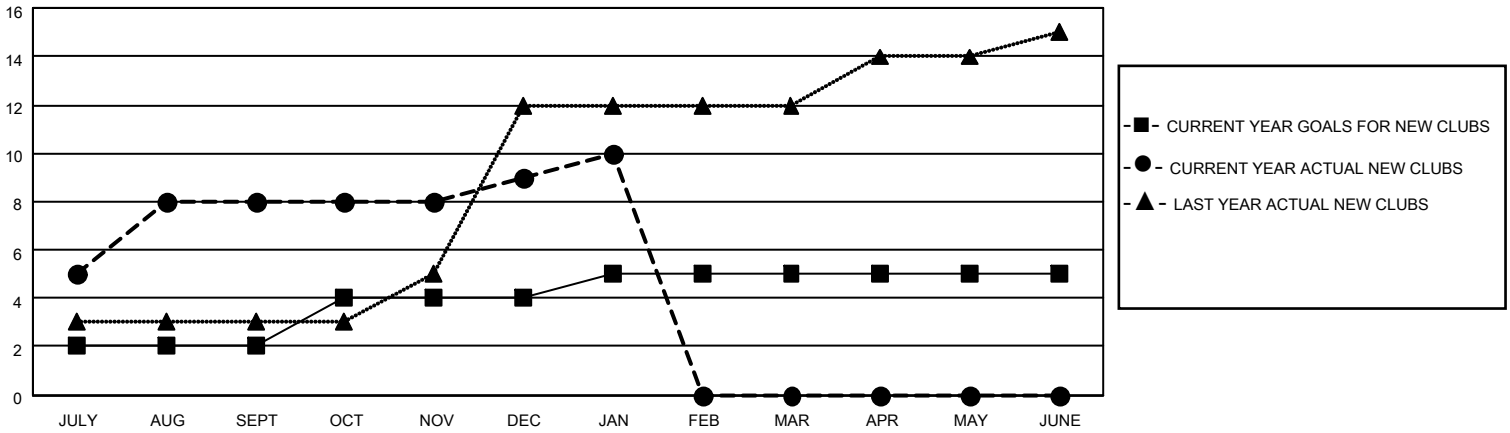
District 322 A

Results as of: 1/31/2022

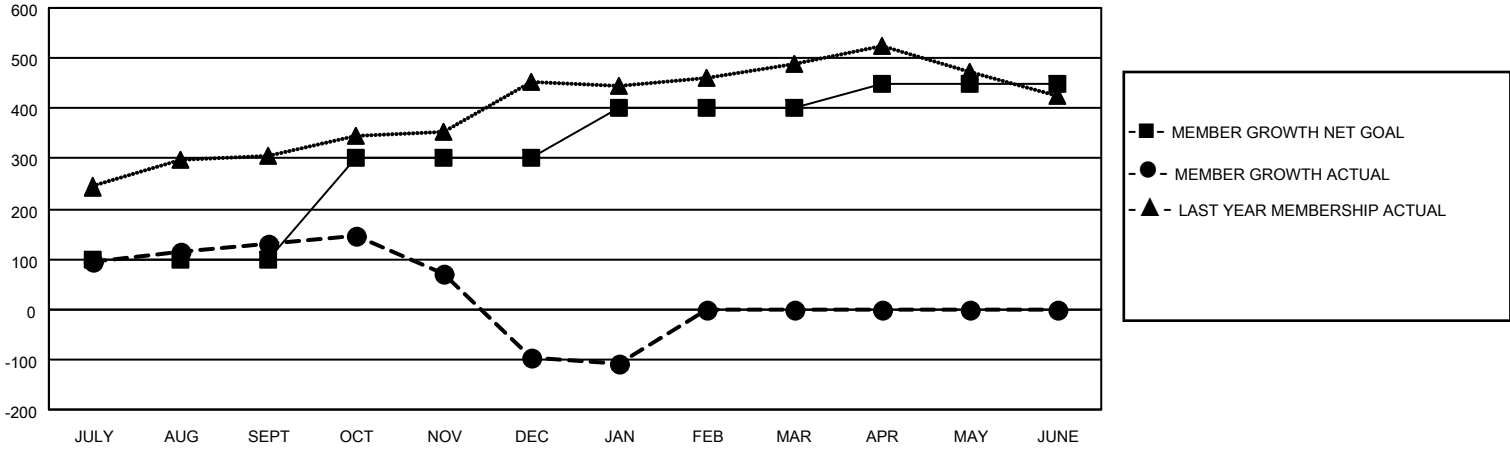
Clubs			
RESULTS FOR 2021-2022			
QUARTER	NEW CLUB GOAL	NEW CLUBS	DROPPED CLUBS
JULY/AUG/SEPT	2	8	3
OCT/NOV/DEC	2	1	4
JAN/FEB/MAR	1	1	1
APR/MAY/JUNE	0	0	0

Members			
RESULTS FOR 2021-2022			
QUARTER	MEMBER GROWTH NET GOAL	MEMBER GROWTH ACTUAL	DROPPED MEMBERS ACTUAL (including transfers)
JULY/AUG/SEPT	100	343	197
OCT/NOV/DEC	200	72	299
JAN/FEB/MAR	100	56	63
APR/MAY/JUNE	50	0	0

GOALS AND ACTUAL NEW CLUBS CUMULATIVE



GOALS AND ACTUAL MEMBERS CUMULATIVE



DROPPED CLUBS: 8	
DROPPED MEMBERS	
DECEASED	10
CLUB CANCELLED	79
OTHER	470
TOTAL	559

43 CLUBS OF 97 ADDED 1 OR MORE NEW MEMBERS

[CLICK HERE FOR CUMULATIVE MEMBERSHIP DATA](#)

<u>GENDER DISTRIBUTION</u>	
MALE	2,285 (67.86%)
FEMALE	1,081 (32.11%)
NON BINARY	0 (0.00%)
PREFER NOT TO ANSWER	1 (0.03%)
TOTAL FAMILY UNIT MEMBERS	1,567
FAMILY MEMBERS PAYING HALF DUES	837